

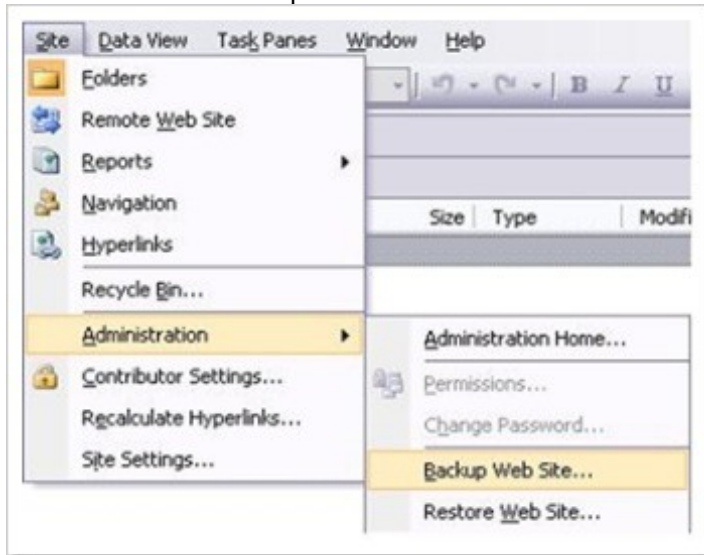
10/07/2007

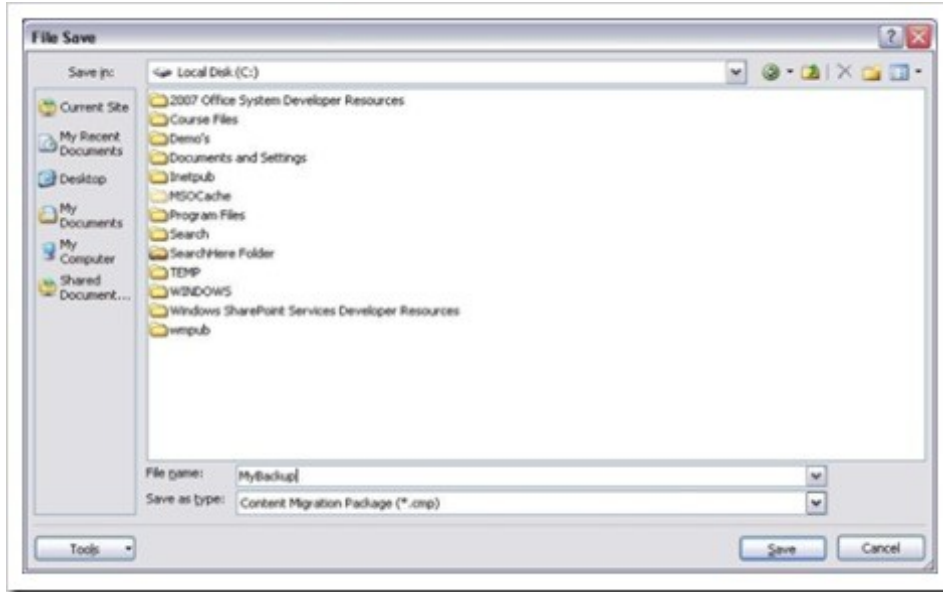
Backup and restore your website using SharePoint Designer

If you are playing with the nice functionality in SharePoint, you want to save from time to time the modifications that you already have been doing on a site. Or you could backup your site before you are going to make it available for your users.

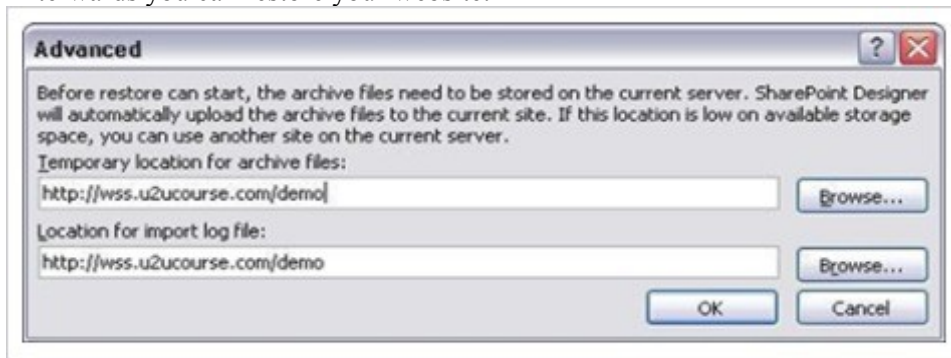
Again, you can use SharePoint Designer to backup and restore your website.

Start by opening your site in SharePoint designer, and use 'Site' in the menu bar to go to 'Backup website' in the 'Administration' option:





Afterwards you can restore your website:



SharePoint Backup and Restore Tutorial

September 15, 2007 · Posted by Kanwal Khipple

0 Comments · [Trackback Url](#)

As the saying goes, its sometimes better to do something yourself than have someone else do it for you. The same is true for the Central Admin site as there are always some issues with some functions and I just prefer doing most administrative tasks via stsadm. I found stsadm to be the easiest and simplest way of doing majority of administrative functions. One of tasks is backing up and restoring SharePoint site collections.

Browse to SharePoint Directory

1. Launch the command prompt
2. Type `cd "%programfiles%\Common Files\Microsoft Shared\web server extensions\12\BIN"`

Backup Site Collection

1. Type `stsadm -o backup -url <url> -filename <filename>`
 - <url> is the url of the site collection that you want to backup
 - <filename> is the filename of where to store the site collection

What's Not Included During Backup?

1. My Sites
2. Sub site collections.

Keep this in mind when doing a backup.

Restore Site Collection

1. Type **stsadm -o restore -url <url> -filename <filename> -overwrite**
 - o <url> is the url of the site collection that you want to restore
 - o <filename> is the filename of where to store the site collection
 - o overwrite be cautious with this command as you don't want to overwrite the wrong site collection

Possible Security Error during Restore

Access is denied. (Exception from HRESULT: 0x80070005 (E_ACCESSDENIED)).

Now you might possibly have an issue during the site collection restore process. This can happen when the the account that you used to do the backup was not the site administrator and during your restore process, it will fail for you. There is a way to fix that in case you are at another location during the restore process and can not run the backup with the correct user account. What you will notice after the restore process not working that the Event Viewer will contain information on what user account does not have access to perform this action.

1. Launch Event View and view the System Events
2. Look for the system will complain about a DECOM event .. starting with: "The application specific permission settings do not grant local activation for with CLSID XXXX to the user referencing a 'domain name service account'".
3. Make a note of the CLSID as we will need that later on.
4. Goto Administrative Tools -> Component Services
5. Click on Component Services and then Computers and then My Computer (depending on your computer name)
6. Click on DCOM Config and change the view to show the items in Details view
7. Look for the item that matches your CLSID
8. Right click on the item that matches the CLSID and click on Properties
9. Select the Security tab
10. Click edit next to Customize under the Launch and Permissions section
11. You will notice that the user that you were trying to run the command is not part of the security listing
12. Add the user and reboot the system

Creating a Backup in SharePoint Designer (CMP File)

Sites Less Than 25 MB

1. Go to **File** then **Open Site** and enter your SharePoint Site Address (like <http://your-wss-site.com>) and use your "WSSAdmin" user to connect.
2. Once connected, go to **Site**, then **Administration** and finally **Backup Web Site**.
3. Enter an existing directory on your site as a backup location, and enter a location on your computer to save your files locally.

Sites More Than 25 MB

Because of a bug with SharePoint Designer, if your site is more than 25 MB when backed up you will not be able to use that backup to restore your site later. The backup needs to be less than 25 MB.

You will have to backup individual documents and uploaded files to computer and delete them from your site to bring your site to less than 25 MB. Once the size of the site is down below 25 MB, use the steps above to backup your site.

Exporting a site as a Personal Web Package (FWP File)

There is also an option in SharePoint Designer to Export site as a Personal Web Package (.fwp file). From the **File** menu select **Export** and then **Personal Web Package**.

Please note that this will not backup all aspects of your site, including list data, sub-sites, or security and permissions settings. The Personal Web Package can be used to export uploaded files and documents, but may not be reliable when restoring full pages. Generally this method is recommended only for restoring only a site template.

Restoring a Backup using SharePoint Designer

If you are restoring a backup to a new sub-web created using SharePoint Designer, you can follow these steps:

1. Connect to your site with SharePoint Designer by going to the **File** menu, selecting **Open Site** and entering your site address (like <http://your-wss-site.com>). When prompted log in using your "WSSAadmin" user to authenticate.
2. Go to **File**, then **New**, and finally **Web Site**.
3. Select "General".
4. Select "Empty Web Site".
5. At the bottom of the window, enter your SharePoint site address with the new directory for sub-site (like <http://your-wss-site.com/sub-web/>). This must be a new directory, and not an existing sub-web.
6. Click "OK".
7. Use steps below to restore your site.

If you are restoring a backup to a new sub-site created from your SharePoint web site, you can follow these steps to create the site:

1. Connect to SharePoint Site in a web browser.
2. Go to **Site Actions**, then **Site Settings**, and finally **Sites and Workspaces**.
3. Click **Create**.
4. Select **Blank Site** as the template. If you use any other templates you may receive an error when trying to complete the restoration.

And then restore your site by following these steps:

1. If you are restoring a full site, make sure to sign up using the **Blank Site** template. Any other templates may give an error when trying to restore.
2. Connect to your new site, or recently created sub-web, from SharePoint Designer.
3. Go to **Site**, then **Administration**, and then **Restore Web Site**.
4. Select your locally saved copy of your backup and Restore it to the server.

Backup and Restore Sharepoint Site

BACKUP SITE COLLECTION

Instruction to use the stsadm command [line tool](#).

TO EXPORT

To back up a site or subsite by using the Stsadm command-line tool



You can use the **export** operation to save a site or subsite. You can then use the **import** operation to import the site or subsite to the same or another server at a later time. Although using the **export** operation saves data for you, it is not the same as using the **backup** operation. You cannot

save a workflow, alerts, features, solutions, or Recycle-Bin state by using the **export** operation. If you want a full-fidelity backup, use the **backup** operation to back up the site collection as described in the "Back up a site collection by using the Stsadm command-line tool" procedure earlier in this article.

Backup a site or subsite by using the Stsadm command-line tool

1. On the drive on which SharePoint Products and Technologies is installed, change to the following directory: %COMMONPROGRAMFILES%\Microsoft shared\Web server extensions\12\Bin.
2. Type the following command:
stsadm -o export -url <URL name> -filename <export file name>
 where *URL name* is the URL of the site or subsite that you want to back up, and where *export file name* is the name of the export file.
3. If the export completes successfully, the command [window displays](#) the following text:
[Copy Code](#)
 Operation completed successfully.
4. If there are errors or warnings, or if the export does not complete successfully, see the *export file name.export.log* file for the file that you specified in step 2.

TO IMPORT

To restore a site or subsite by using the Stsadm command-line tool

You can use the **export** operation to save a site or subsite. You can then use the **import** operation to import the site or subsite to the same or another server at a later time.

Restore a site or subsite by using the Stsadm command-line tool

1. On the drive where SharePoint Products and Technologies is installed, change to the following directory: %COMMONPROGRAMFILES%\Microsoft shared\Web server extensions\12\Bin.
2. To import a site or a subsite, type the following command, and then press ENTER:
stsadm -o import -url <URL name> -filename <import file name>
 where *URL name* is the URL of the site or subsite that you want to import and *import file name* is the UNC path and file name of the file that you want to import — for example, backupshareimport.cmp.
3. If the import completes successfully, the command window displays the following text:
[Copy Code](#)
 Operation completed successfully.
4. If there are errors or warnings, or if the import does not complete successfully, see the *import file name.import.log* file for the file that you specified in step 2.

BACKUP SHAREPOINT SUBSITES

To backup individual subsite you should use Sharepoint Designer.
 Here is a link give you detail instruction on how to backup a sub site on sharepoint designer.

<http://office.microsoft.com/en-us/sharepointdesigner/HA100699391033.aspx>
FAQ

*** Where to look when backup or restore failed?**

A: Look in spbackup.log

*** Difference between new and overwrite option?**

A: Use new option when you want [] to restore to a different farm or a new server, database etc, and use overwrite [] to restore over old database.

*** Access right for [] backup and restore**

A: You will need to be Farm administrator to perform [] backup and restore

Backing Up Sharepoint Sites

Wednesday, August 06, 2008 11:48 AM

There are three ways of backing up Sharepoint sites, which one you use depends on which site/subsite you are backing up and what you intend to do with the backup.

1. stsadm backup
2. Sharepoint Designer backup
3. stsadm export

1. stsadm -o backup and stsadm -o restore

This can only be performed from the server itself and only allows you to backup from the top level site downwards, however, it allows you to essentially clone the site collection along with preserving all metadata, user rights. Ideal for disaster recovery purposes.

To backup:

1. On the server locate the file stsadm.exe (should be in \Program Files\Common Files\Microsoft Shared\web server extensions\12\BIN),

Tip: Add the path to the stsadm.exe file into the environment variable path for the server, saves a whole lot of typing!

2. From a command prompt, type [path to stsadm.exe]\stsadm -o backup -url http://[url-of-the-web-site] -filename [path\filename.dat]

To restore:

1. Create a web application (but don't create a site collection)

2. From a command prompt, type [path to stsadm.exe]\stsadm -o restore -filename [path\filename.dat] -url http://[url-of-the-web-site]

2. Sharepoint Designer Backup

This backup method is ideal for moving individual sites and subsites around within a site collection as well as migrating them from one server to another. You only need administrative rights to the site/subsite rather than access to the actual server. The main issue with a Designer backup is the loss of created/modified metadata along with Sharepoint Designer created custom data-view web-parts. Another major problem with Sharepoint Designer backups is the 25MB limit which makes Designer backups not a whole lot of use once the site is in use.

To backup:

1. Open the site with SharePoint Designer
2. Select Menu **Site > Administration > Backup web site**
3. On the next screen, you can check the box to include subsites in the backup

4. Unless your current website is low on disk space, leave the temporary location where it is and choose where to save the final .cmp file.

To restore:

1. Open the site above where the restored site will be using Sharepoint Designer
2. From the **File** menu go **New > Website**
3. From the website templates, choose the **Empty Web Site template**
4. In the '**Specify the location of the new website**' box type the path to the new site.
5. From the **Site** menu select **Administration > Restore Website**
6. Select the .cmp file and click **Open**.

3. stsadm -o export and stsadm -o import

This type of backup has similar uses to the Sharepoint Designer backups (loss of some metadata and web-part data-views), however this method avoids the 25MB site limit. The other smallish issue is you need access to the server.

To export a site:

1. On the server locate the file stsadm.exe (should be in \Program Files\Common Files\Microsoft Shared\web server extensions\12\BIN),
2. At a command prompt type **[path to stsadm.exe]\stsadm -o export -url http://[url-of-the-web-site/subsite] -filename [path\filename.dat]**

If you include the -includesecurity switch, then the security settings and site owner information is retained, otherwise the site owner becomes whoever performs the import.

To import a site:

1. Create a web application and a site collection using sharepoint central administration if they don't already exist. Or you can create a subsite in an existing site collection, either way use the "Blank site" template.

Caution: Watch out here for subsites you included in the export, you will need to create blank versions of those as well otherwise the import will fail. Check the spelling of the url rather than the site name, they do need to be exactly the same.

2. At a Command prompt type **stsadm -o import -url http://[url-of-the-web-site/subsite] -filename [path\filename.dat]**

Add Icons for Unknown File Types for the SharePoint Document Library

Tuesday, April 29 2008 @ 11:11 PM MDT

Contributed by: admin

Views:: 740

If you added a new document type to sharepoint 2007 and that file type is not already specify in Sharepoint you get a default icon for that file type. For example to add in a .xla document type you will get a default icon for this file type.

Here are the step to add or modify the icon for the new file type.

1. Go the your sharepoint server
2. Go in open up the this file C:\Program Files\Common Files\Microsoft Shared\web server extensions\12\TEMPLATE\XMLDOC\ICON.XML.
3. Search for ByExtension
4. In this example we will try to add in the xla file type. Add in `<Mapping Key="xla" Value="XLA16.GIF"/>`
5. Ensure this icon file is in C:\Program Files\Common Files\Microsoft Shared\web server extensions\12\TEMPLATE\IMAGES
6. You will need to restart Internet Informatin Services (IIS) for the change to take effect.

